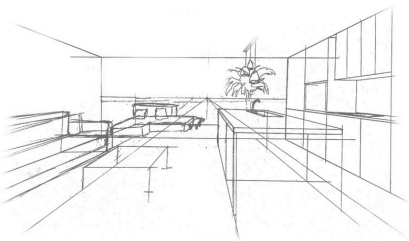


Royal Sea Breeze

L U X U R Y L I V I N G

Floorplans

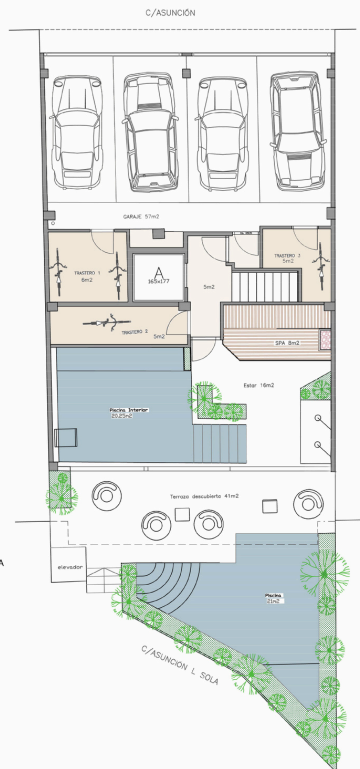


LOS ALCÁZARES MAR MENOR

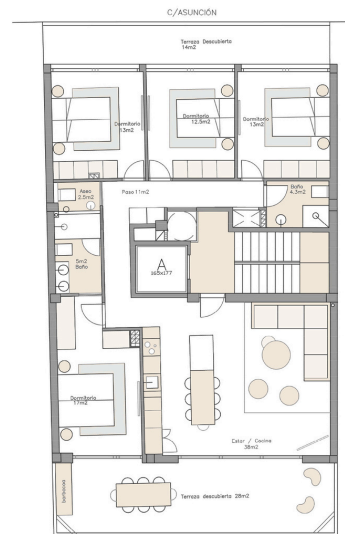
4 PROPERTIES WITH SEA VIEWS
AND SWIMMING POOL
4 PROPIEDADES VISTAS AL MAR
Y PISCINA

With modern amenities and seamless access to the beach, these homes create the ultimate blend of comfort, style, and coastal luxury.

Con modernas comodidades y acceso directo a la playa, estas casas ofrecen la combinación perfecta de confort, estilo y lujo costero.



BOTTOM FLOOR/PLANTA BAJA



FIRST FLOOR/PRIMERA PLANTA

BOTTOM FLOOR / PLANTA BAJA

FIRST FLOOR/PRIMERA PLANTA	
CONSTRUCTED AREA/ÁREA CONSTRUIDA	m ²
INDOOR/INTERIOR	141m ²
OUTDOOR/EXTERIOR	62m ²
TOTAL	203m²

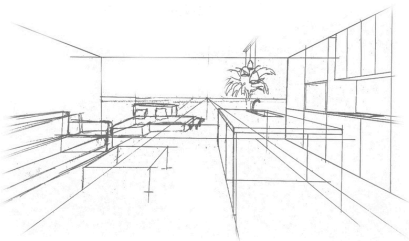
EXCLUSIVE RESIDENT AREA / ÁREAS RESIDENCIALES EXCLUSIVA

Outdoor Terrace / Terraza Exterior	41m ²
Spa / Spa	8m ²
Indoor Area / Área Interior	16m ²
Pool / Piscina	21m ²
Indoor Pool / Piscina Interior	20.25m ²
Storage Space / Trastero	6m ²
Garage / Garaje	57m ²

FIRST FLOOR/PRIMERA PLANTA

FIRST FLOOR/PRIMERA PLANTA	
CONSTRUCTED AREA/ÁREA CONSTRUIDA	m ²
INDOOR/INTERIOR	117.20m ²
OUTDOOR/EXTERIOR	42m ²
TOTAL	145.20m²
+GARAGE/GARAJE	12m ²
+STORAGE/TRASTERO	6m ²
TOTAL +	163.2m²

INDOOR/INTERIOR		m ²
Living Room/ Estar		38m ²
Master Bedroom/Habitación n°1		17m ²
Bathroom/Baño		5m ²
Bedroom n°2/Habitación n°2		13m ²
Bedroom n°3/Habitación n°2		13m ²
Bedroom n°4/Habitación n°2		12.5m ²
Bathroom/Baño		4.3m ²
Toilet/Aseo		2.5m ²
OUTDOOR/EXTERIOR		m ²
Sea Terrace/ Terraza del mar		28m ²
Terrace/ Terraza trasera		14m ²

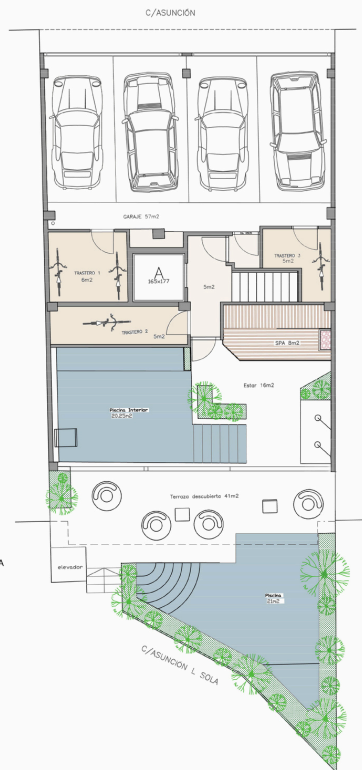


LOS ALCÁZARES MAR MENOR

4 PROPERTIES WITH SEA VIEWS
AND SWIMMING POOL
4 PROPIEDADES VISTAS AL MAR
Y PISCINA

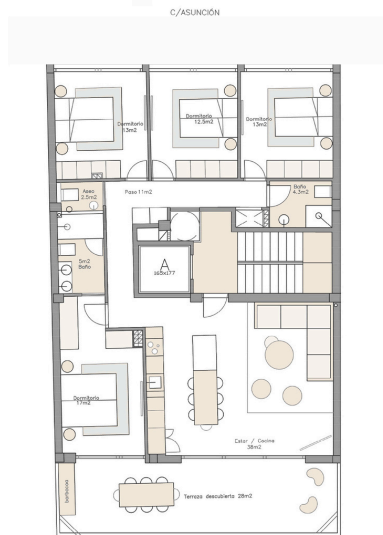
With modern amenities and seamless access to the beach, these homes create the ultimate blend of comfort, style, and coastal luxury.

Con modernas comodidades y acceso directo a la playa, estas casas ofrecen la combinación perfecta de confort, estilo y lujo costero.



BOTTOM FLOOR/PLANTA BAJA

SECOND&THIRD FLOOR
/SEGUNDA Y TERCERA PLANTA



BOTTOM FLOOR / PLANTA BAJA

FIRST FLOOR/PRIMERA PLANTA	
CONSTRUCTED AREA/ÁREA CONSTRUIDA	m ²
INDOOR/INTERIOR	141m ²
OUTDOOR/EXTERIOR	62m ²
TOTAL	203m²

EXCLUSIVE RESIDENT AREA / ÁREAS RESIDENCIALES EXCLUSIVA

Outdoor Terrace / Terraza Exterior	41m ²
Spa / Spa	8m ²
Indoor Area / Área Interior	16m ²
Pool / Piscina	21m ²
Indoor Pool / Piscina Interior	20.25m ²
Storage Space / Trastero	6m ²
Garage / Garaje	57m ²

SECOND&THIRD FLOOR /SEGUNDA Y TERCERA PLANTA

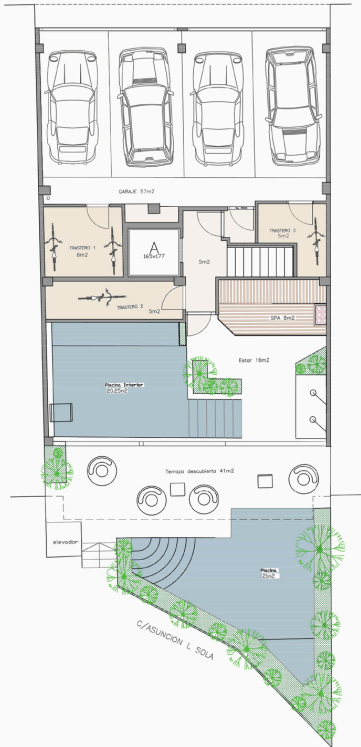
FIRST FLOOR/PRIMERA PLANTA

CONSTRUCTED AREA/ÁREA CONSTRUIDA	
INDOOR/INTERIOR	117.20m ²
OUTDOOR/EXTERIOR	28m ²
TOTAL	145.20m²
+ GARAGE/GARAJE	12m ²
+ STORAGE/TRASTERO	5m ²
TOTAL +	162.2m²

INDOOR/INTERIOR

Living Room / Estar	38m ²
Master Bedroom / Habitación n°1	17m ²
Bathroom / Baño	5m ²
Bedroom n°2 / Habitación n°2	13m ²
Bedroom n°3 / Habitación n°2	13m ²
Bedroom n°4 / Habitación n°2	12.5m ²
Bathroom / Baño	4.3m ²
Toilet / Aseo	2.5m ²
OUTDOOR/EXTERIOR	
Sea Terrace / Terraza del mar	28m ²

C/ASUNCIÓN



BOTTOM FLOOR/PLANTA BAJA

BOTTOM FLOOR / PLANTA BAJA

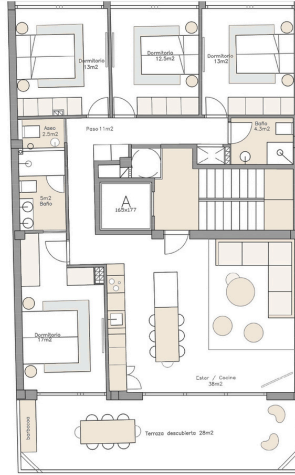
FIRST FLOOR/PRIMERA PLANTA

CONSTRUCTED AREA/ÁREA CONSTRUIDA	m ²
INDOOR/INTERIOR	141m ²
OUTDOOR/EXTERIOR	62m ²
TOTAL	203m²

EXCLUSIVE RESIDENT AREA / ÁREAS RESIDENCIALES EXCLUSIVA

Outdoor Terrace / Terraza Exterior	41m ²
Spa / Spa	8m ²
Indoor Area / Área Interior	16m ²
Pool / Piscina	21m ²
Indoor Pool / Piscina Interior	20.25m ²
Storage Space / Trastero	6m ²
Garage / Garaje	57m ²

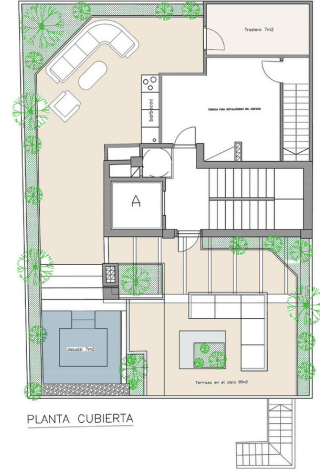
C/ASUNCIÓN

FOURTH FLOOR
/CUARTA PLANTAFOURTH FLOOR
/CUARTA PLANTA

FIRST FLOOR/PRIMERA PLANTA

CONSTRUCTED AREA/ÁREA CONSTRUIDA	m ²
INDOOR/INTERIOR	117.20m ²
OUTDOOR/EXTERIOR	28m ²
TOTAL	145.20m²
+GARAGE/GARAJE	12m ²
+STORAGE/TRASTERO	7m ²
TOTAL +	164.2m²

C/ASUNCIÓN



PLANTA CUBIERTA

SKY TERRACE
/TERRAZA EN EL CIELO

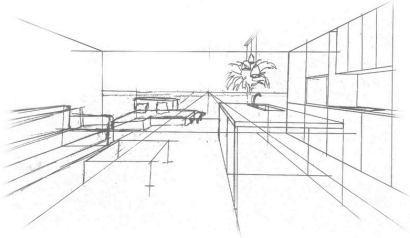
INDOOR/INTERIOR

Living Room / Estar	38m ²
Master Bedroom/Habitación n°1	17m ²
Bathroom/Baño	5m ²
Bedroom n°2/Habitación n°2	13m ²
Bedroom n°3/Habitación n°2	13m ²
Bedroom n°4/Habitación n°2	12.5m ²
Bathroom/Baño	4.3m ²
Toilet/Aseo	2.5m ²
OUTDOOR/EXTERIOR	
Sea Terrace/ Terraza del mar	28m ²

OUTDOOR/EXTERIOR

Sky Terrace / Terraza en el Cielo	85m ²
Jacuzzi	7m ²
Storage / Trastero	7m ²
TOTAL	99m²

Exterior building view



LOS ALCÁZARES MAR MENOR

INTRODUCING AN EXCLUSIVE FOUR-STORY RESIDENTIAL PROJECT, WHERE EACH FLOOR IS DEDICATED TO A SINGLE, TRUE LUXURY APARTMENT. WITH SPACIOUS LAYOUTS, PREMIUM FINISHES, AND CUTTING-EDGE DESIGN, EVERY DETAIL HAS BEEN METICULOUSLY CRAFTED TO OFFER AN UNPARALLELED LIVING EXPERIENCE.

THIS PROJECT COMBINES PRIVACY, COMFORT, AND SOPHISTICATION IN ONE OF THE MOST SOUGHT-AFTER LOCATIONS, MAKING IT THE ULTIMATE CHOICE FOR THOSE SEEKING REFINED, HIGH-END LIVING.

